

TECHNICAL DETAILS

AXIS STROKES

X	mm	180
Y	mm	190
Z	mm	110
B-Axis (swivel axis)	°	-30 to +120
A-Axis (rotary axis)	°	360 (endless)

POSITIONING ACCURACY

Repeatable accuracy	mm	0.001
Absolute accuracy linear	mm	< 0.02
Absolute accuracy rotation	mm	< 0.01
Absolute accuracy swivel axis	mm	< 0.01

CNC-CONTROL

Beckhoff	CX2020 (TwinCAT)
----------	------------------

WORKING SPINDLE

Speed range	rpm	6,000 to 100,000
Power	kW	0.5 / 1.0
Tool holder		Direct shaft clamping

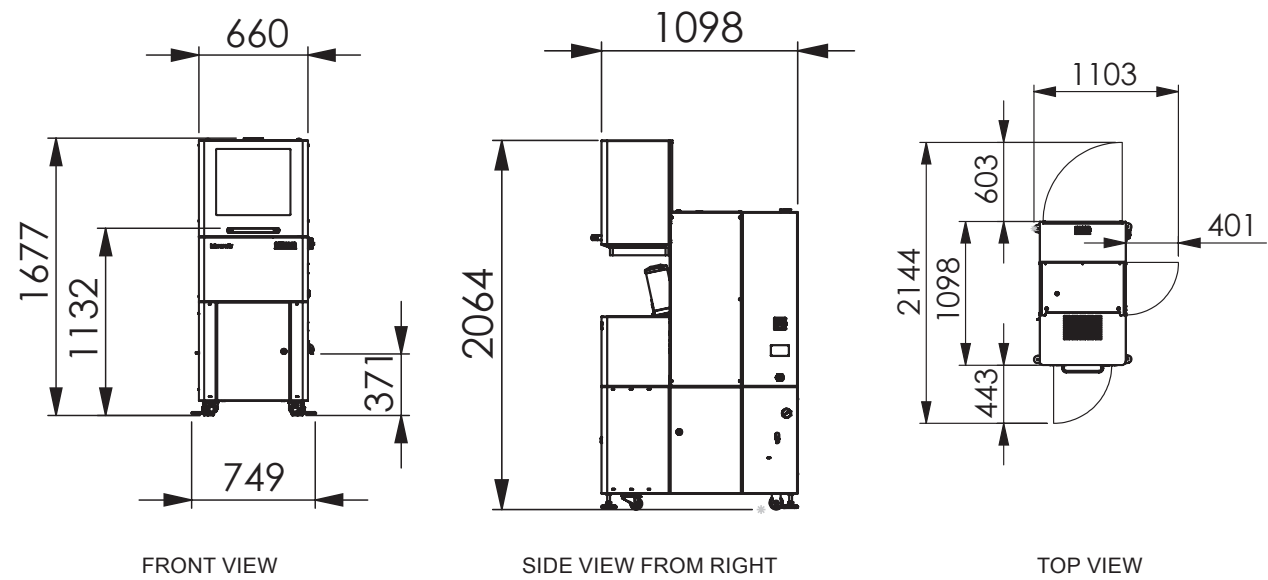
TOOL CHANGER

Number of tool pockets		28
Tool diameter	mm	4 / 6

GENERAL

Machine weight	kg	406
Dimensions	mm	749 x 1098 x 1677 (w/d/h)
Line voltage	V AC	200 – 240 / 100 – 120
Nominal frequency	Hz	50 / 60
Nominal power	kW	0.3
Air pressure	bar	6.5
Air quantity	l/min	250

INSTALLATION PLAN



PRIMACon CONSULTING AND SERVICE

Comprehensive and competent - right from the start

PRIMACon Consulting

Starting from the first sales talk, we will assist you in selecting the most suitable machine configuration for your product and advise you in detail about:

- ✓ Programming
- ✓ CAD/CAM
- ✓ Milling technology
- ✓ Tools
- ✓ Clamping technique
- ✓ Lubrication and Cooling unit

PRIMACon Application Consulting & Training

Our specialists will gladly answer any question regarding milling or programming and support your production competently with modern CAD / CAM technology and our know-how.

In addition, we also provide training on the operation and maintenance of our machines.

PRIMACon Spare parts service

Replacement part supply with availability of 95%. If you order before 2 pm, the parts will be shipped the same day.

PRIMACon After Sales Service

When you have decided on a PRIMACon machine, we will take over the delivery and commissioning. As long as the machine is used in your production we provide service and assist you in a quick and uncomplicated way.

We provide remote maintenance by data transfer and update your software to the latest version on a regular basis.

We guarantee you:

- ✓ Service coordination within 24 hours
- ✓ and On-site service within 48 hours



PRIMACon Inhouse5x

5-axis-milling machine
compact – efficient – user friendly

simply more precise

PRIMACon Service-Hotline

Our specialists will assist you quickly in finding solutions and fixing errors before they become a problem. Please contact us:

+49 (0)8803 6321 - 30

PRIMACon GmbH

Alte Kohlenwäsche 13
82380 Peißenberg

phone: +49 (0)8803 6321 - 0 | info@primacon.de
fax: +49 (0)8803 6321 - 13 | www.primacon.com

PRECISION ON SMALLEST SPACE

PRIMA CON Inhouse5x

PRIMA CON presents a compact, energy efficient and user-friendly 5-axis milling machine, which is presented under the name **Inhouse5x**. It impresses with its small dimensions and a low total weight. The basic version does not feature microaccuracy features, but the **Inhouse5x** achieves an accuracy of +/- 10 µm on the workpiece; enough for a multitude of applications. The machine scores not least in **dental technology, when milling graphite electrodes, when grinding technical ceramics, in watchmaking workshops or in training**. The focus here is on the production of **prototypes, individual parts and small series**.

INNOVATIVE MACHINE CONCEPT

- High-performance cast iron body
- Horizontal mounted milling spindle with 10° slope
- For dry and wet machining:
 - Integrated suction system for dusty particles
 - Integrated pump and filter



SIMPLE OPERATING CONCEPT

- Modern machine control for 5-axis simultaneous processing of Beckhoff
- Clearly arranged and user friendly

HIGH-FREQUENCY MILLING SPINDLE

- 6,000 to 100,000 rpm
- Direct shaft clamping
- 4 mm shaft

AUTOMATIC TOOL CHANGER

- Tool changing magazine with 28 slots
- Auto-detection system for length measurement and break check

ADVANTAGES OF THE Inhouse5x

- ✓ Customized solutions possible due to machine concept
- ✓ Low maintenance, thus high machine availability and low machine costs
- ✓ Economical processing of any machinable material

- ✓ Full jet lubrication and compressed air nozzle are integratede
- ✓ Integrated cooling lubricant unit (lubricaton oil or water)
- ✓ User-friendly handling

- ✓ Processing of dusty materials without refitting or upgrading the machine (integrated suction)
- ✓ Simplest operation of the machine by touchpad
- ✓ Reliability and longevity in 24 hours continuous operation

- ✓ Integrated uninterruptible power supply unit protects in case of power failure and mains fluctuations
- ✓ Low installation dimensions

COMPACT UND STABLE FRAME

- Monobloc steel cast body for highest stability

ENCAPSULATED ROTARY-SWIVEL-AXIS

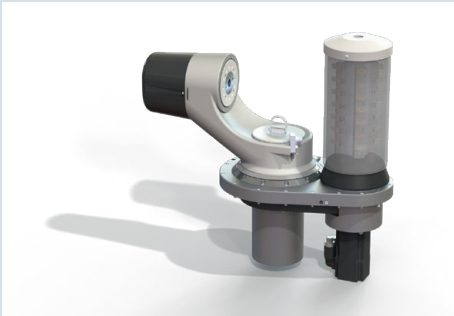
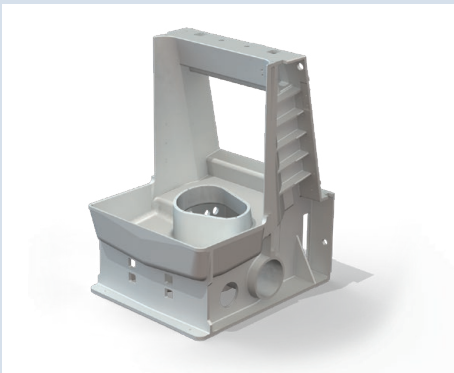
- 5-axis simultaneous processing with synchronous servo motors on the A- und B-axis
- Setting angle of the swivel axis from -30° to +120° for optimized machining strategies
- Central arrangement of the rotary axis for high machine accuracy and dynamics

AUTOMATIC TOOL CHANGER

- Tool magazine für 28 tools directly in the workspace
- Automatic tool length measurement and breakage control

EASY TO USE TOUCHPAD

- Clear and user-friendly



AREAS OF APPLICATON

- ✓ Dental and medical technology
- ✓ Watch industry
- ✓ Graphite electrodes
- ✓ Fiber composites

